

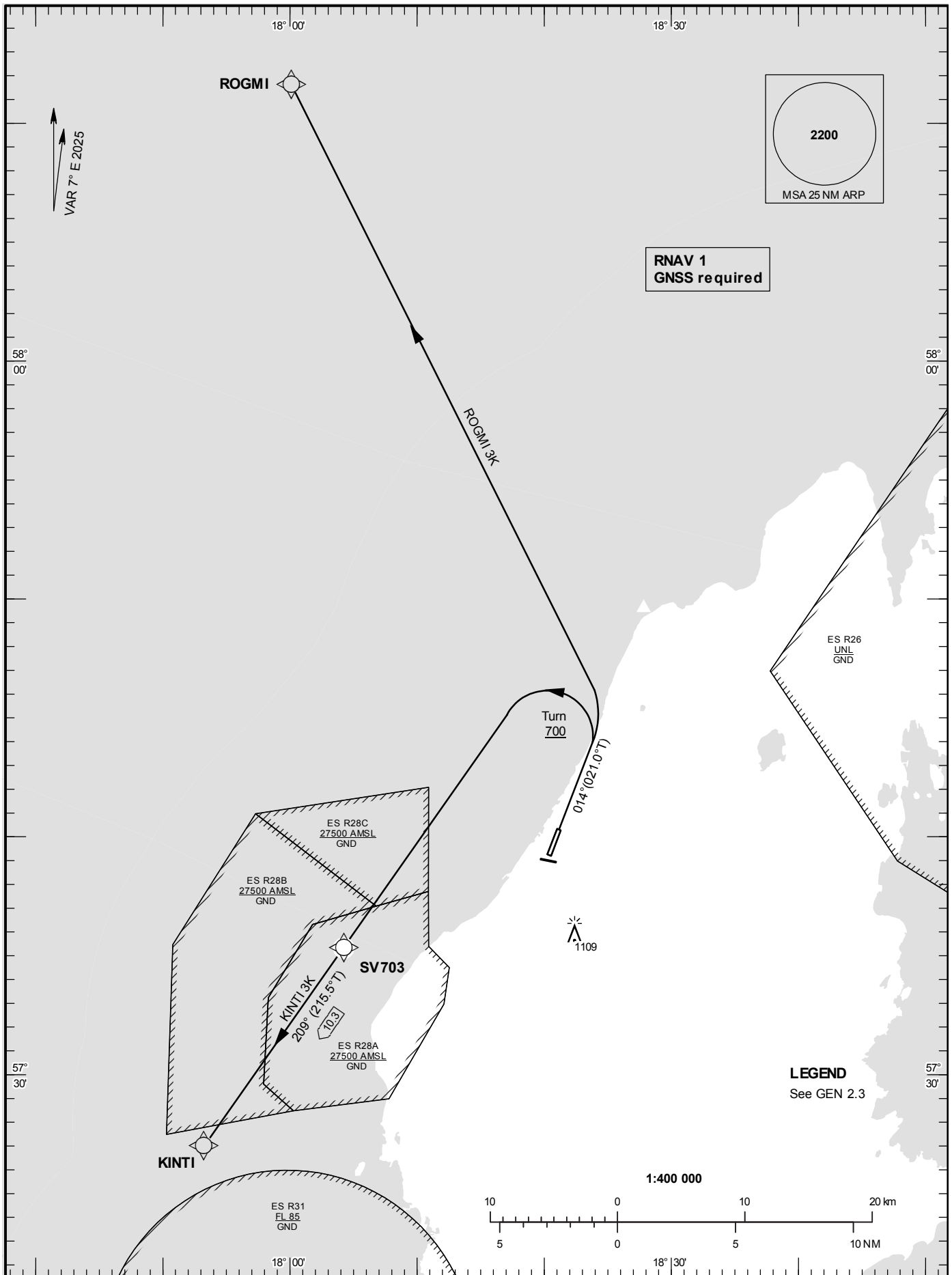
**STANDARD DEPARTURE
CHART –
INSTRUMENT (SID) - ICAO**

HGT and ALT in ft
BRG are MAG (True)
TA 5000 ft AMSL

VISBY TOWER	120.305
VISBY APPROACH	126.155

**VISBY
RNAV RWY 03**

KINTI 3K, ROGMI 3K



VISBY

Prescribed Coding of RNAV SIDs for RWY 03

REMARK

MNM climb gradient required by ATC: Aircraft proceeding on SID shall use 6.6% (400 ft/NM) as a minimum gradient of climb up to 5000 ft AMSL due to airspace restrictions. Aircraft unable to conform with this procedure shall inform ATC accordingly.

Operators unable flying RNAV shall inform ATC by using phraseology “unable RNAV SID due RNAV type”. ATC will then provide vectors or provide clearance via conventional SID or clearance to TMA exit point stated in the flight plan or receive a clearance based on vectoring after departure.

KINTI 3K (KINTI THREE KILO DEPARTURE)

Path Desc	Waypoint Identifier	Fly-over	Course °M(°T)	Dist (NM)	Turn Dir	Altitude	Speed Limits (kt)	VPA/RDH	Rec Navaid	Navigation Specification
CA	-	-	014°(021.0°)	-	-	+700	-	-	-	RNAV 1
DF	SV703	N	-	-	L	-	-	-	-	RNAV 1
TF	KINTI	N	209°(215.5°)	10.3	-	-	-	-	-	RNAV 1

SID instruction: Climb on course 014°. At and above 700 feet turn left direct to SV703 – KINTI.

ROGMI 3K (ROGMI THREE KILO DEPARTURE)

Path Desc	Waypoint Identifier	Fly-over	Course °M(°T)	Dist (NM)	Turn Dir	Altitude	Speed Limits (kt)	VPA/RDH	Rec Navaid	Navigation Specification
CA	-	-	014°(021.0°)	-	-	+700	-	-	-	RNAV 1
DF	ROGMI	N	-	-	L	-	-	-	-	RNAV 1

SID instruction: Climb on course 014°. At and above 700 feet turn left direct to ROGMI.